

DOT PIXEL-RD035 SERIES

DPXL-RD035 RGBW



YYZ Dot Pixel series is a big size media pixel intelligent LED, with transparent shape cover, low power consumption, long operation life in excess of 50,000 hours. Easy to install and configure into any conceivable shape, SMART PXL dots create spectacular, crisp lighting effects while adding a stylish design element to your venue or installation chose between default options and custom items. Various customization option include LED color(RGB, Warm white or cold white); pixel pitch, flexible mounting capability, accommodate a variety of irregular surfaces. IP67-rated, anti-UV polycarbonate housing for outdoor application (Video wall, Curtain wall, Feature wall, Logo, Signage and 3-dimensional shapes).

FEATURES

CONTROL GEAR	Remote
OPTIC	Clear/ Diffused
INPUT VOLTAGE	12V dc
POWER CONSUMPTION	0.9W/Node
MOUNTING	Surface mounted
LUMINOUS FLUX	40lm /W
BRAND OF LEDS	Epistar
BEAM ANGLE	120°
CONTROL	On/Off, DMX
BODY MATERIAL	Poly Carbonate
BODY FINISH	Black, White, Grey
DIFFUSER MATERIAL	Poly Carbonate
LED LIFETIME	50,000hrs L70, B10
DIMENSION	Ø35x12.4mm
OPERATIONG TEMP	-30C ~ 50°C

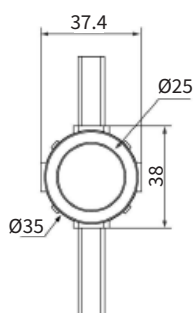


- EPISTAR LED Quality
- 12V DC Working Voltage
- 0.9W/Node Rated power

ELECTRICAL DATA

POWER CONSUMPTION	0.9W/Node
SUPPLY VOLTAGE	12V dc
CRI	90
COLORS	RGBW

DRAWING



ORDERING LOGIC

PRODUCT	WATTAGE	COLOR TEMPERATURE	CONTROL	INPUT VOLTAGE	OPTIC	BODY FINISH	OPTIC
DPXL-RD035	0.9 - 0.9W	(RGBW) - RGBW	SW - On/Off DM - DMX	DC - 12VDC	120 - 120°	BK - Black WH - White GR - Grey XX - Custom	CL - Clear DF - Diffused

Sample: DPXL-RD035 - 0.9 - RGBW - DM - DC - 120 - BK - CL