

LINEAR WALLWASHER SERIES

LWW PLUS- Mono



YYZ LWW Plus series is a new solution of large-scale high brightness architectural illumination like facade, bridge, retail and hospitality applications. This IP66 rated fixture is with AC line input, high performance linear luminaire for washing or grazing exterior facades. It is equipped with high-brightness LEDs, it offers impressive wall-washing and signage illumination. Available in multiple optic designs, this series can use a combination of color and beam angles to support a variety of architecture applications.



FEATURES

FINISH	6063 High density aluminum
WORKING VOLTAGE	100-277 Vac
RATED POWER	12/24/36/48W
BEAM ANGLE	15°, 20°, 35°, 50°. 10x40°
AVAILABLE LENGTH	304mm, 598mm, 891mm, 1183mm
MOUNTING	Surface mounting
OPTIC	Clear tempered glass
DIMENSIONS	304, 598, 894, 1183(L) x 60(B) x 61.5(H)
OPERATING TEMP	-5° C - +50° C
STORAGE TEMP	-20° C - +60° C
LAMP LIFE	50,000 hrs
BODY COLOR	Black, Grey, White
CONTROL	On/Off, Triac, 0-10V, Dali

CREE / NICHIA
LED Quality

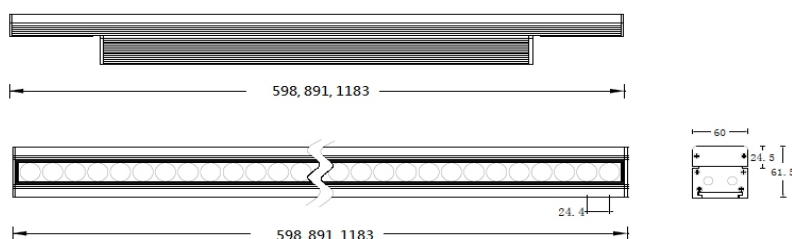
100-277 VAC
Working Voltage

12W, 24W, 36W, 48W
Rated power

ELECTRICAL DATA

POWER CONSUMPTION	12/24/36/48W
SUPPLY VOLTAGE	100-277 Vac
COLORS	2700K, 3000K, 3500K, 4000K, 5000K, 5700K, 6500K, Red, Green, Blue
CRI	90+
LUMEN	90-100 lm/W @ 3500K

DIMENSION



ORDERING LOGIC

PRODUCT	POWER	OPTIC	COLOR TEMPERATURE	CONTROL	VOLTAGE	FIXTURE LENGTH	BODY COLOR	CUSTOM	
LWW PLUS	12 - 12W (304mm)	15 - 15°	(CT27)	2700K	DX - DMX	277 - 100-277VAC	BK - BLACK	XX	
			(CT30)	3000K			GR - GRAY		
	24 - 24W (598mm)	20 - 20°	(CT35)	3500K	DA - DALI		891 - 891mm (36W)		WH - WHITE
			(CT40)	4000K			1183 - 1183mm (48W)		
	36 - 36W (891mm)	35 - 35°	(CT50)	5000K	SW - ON/OFF				
			(CT57)	5700K					
	48 - 48W (1183mm)	50 - 50°	(CT65)	6500K					
			(RD)	Red					
			(GR)	Green					
			(BL)	Blue					

Sample: LWW PLUS - 12 - 15 - CT 27 - DX - 277 - 304 - BK - XX

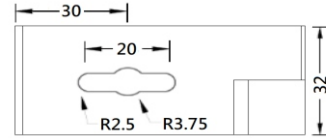
LWW PLUS- Mono

ACCESSORIES

Mounting Bracket



LWWMBA
Description: DPMB is an adjustable mounting option are used for applications that require angle adjustments.



Glare Control



LWWGLS-304/598/891/1183
YYZ LWW anti-glare lover symmetric



LWWGLA-304/598/891/1183
YYZ LWW anti-glare lover asymmetric

EXTENSION CABLE

Part Number	Product Image	Length (mm)	Application	Cable end		Conductor size
YYZCF-250-3pin-XX		250	Power Lead	Female	Bare	3 x 16AWG (1.5mm ²)
YYZCF-2000-3pin-XX		2000				
YYZCF-6000-3pin-XX		6000				
YYZCF-15000-3pin-XX		15000				
YYZCF(Shield)-250		250	Data Lead	Female	Bare	3 x 22AWG Shield (0.3mm ²)
YYZCF(Shield)-2000		2000				
YYZCF(Shield)-6000		6000				
YYZCF(Shield)-15000		15000				
YYZCF-250-6pin-XX		250	Power and Data Combined Lead	Female	Bare	3 x 16AWG (1.5mm ²) + 3 x 22AWG Shield (0.3mm ²)
YYZCF-2000-6pin-XX		2000				
YYZCF-6000-6pin-XX		6000				
YYZCF-15000-6pin-XX		15000				
YYZCL-003-6pin-XX		300	Power and Data Combined Extension Cable	Female	Male	3 x 16AWG (1.5mm ²) + 3 x 22AWG Shield (0.3mm ²)
YYZCL-020-6pin-XX		2000				
YYZCL-060-6pin-XX		6000				
DMX-TER-AC-6pin-M		N/A	DMX Terminator	Male	End Cap	
AC-LEADIN-T336		N/A	T-connector for DMX and Power Lead	Combines the power (3 pin male), DMX signal (3 pin male) into a 6 pin female leading end		
AC-P-INJECT-T636			T connector for the 6 pin cable with power injector	T connector 6-pin male to 6-pin female with AC male power injector		