

INDOOR LED STRIP DIM2 WARM FLEX SERIES

LFX-W-9.6-CTWD-1828-Z9-168-24-CV-10-H-1-HT-R-M-T-L-W-L05



3M
TAPE WET RATED



CE 9.6W

Our LFX series flexible linear LED light strips is a simple, effective solution for a wide range of lighting applications where crisp, single color light is desired. Ideal for indirect accent lighting, as well as a store fixtures, display cases, steps and stairwells, furniture, kitchen and cabinet lighting, along with other task and specialty applications.

FEATURES

LIGHT SOURCE	1828 LED
LED QUANTITY	168 LEDS / m
FINISH	WHITE PCB
WORKING VOLTAGE	24 V DC
RATED CURRENT	200mA
RATED POWER	9.6W / m
RADIANCE ANGLE	120°
LAMP LIFE	50000 HRS
MOUNTING	3M TAPE ON THE BACK
CONNECTION	HARDWIRED TAILS
CUTTING INCREMENTS	EVERY 83.33 mm
DIMENSIONS	10mm X 5000mm(PCB)
MAX DAISY RUN	5 m

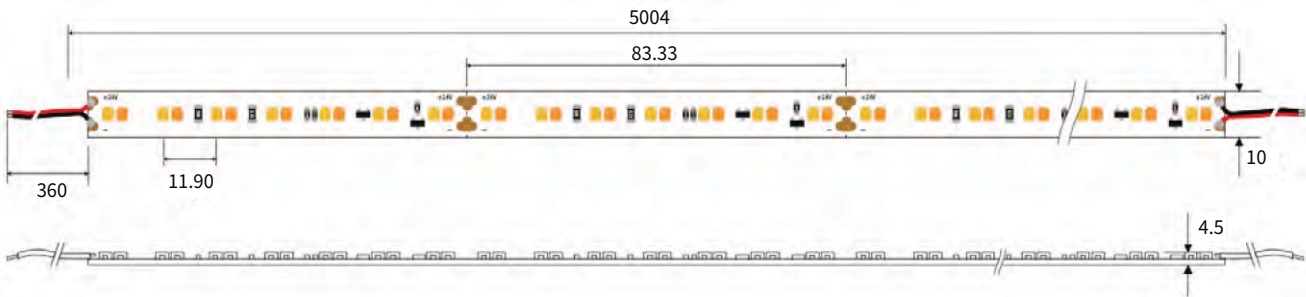


- CREE**
LED Quality
- 24V DC**
Working Voltage
- 9.6W / m**
Rated power
- 3M Tape on the back**
Mounting

ELECTRICAL DATA

POWER CONSUMPTION	9.6W
SUPPLY VOLTAGE	24 V DC
SUPPLY CURRENT	200mA
COLORS	1800-3000K
LEDS / 3.3FT	168

DIMENSIONS



ORDERING LOGIC

PRODUCT SERIES	TYPE	POWER	COLOR TEMPERATURE	LED TYPE	BIN	NO. OF LED	VOLTAGE	CIRCUIT	WIDTH	CRI	NO OF LED ROWS	CONNECTION
LFX	W - Wet rated (IP54)	9.6 - 9.6W	(CTWD) 1800-3000K	1828	Z9	168 - 168 LEDs/mtr	24-24V	CV-Constant voltage	10 - 10mm	H - High (90)	1	HT - Hardwired Tai OC - Outdoor Connector

MODEL	COLOR CONTROL	LIGHT EMITTING DIRECTION	LED POWER	PCB COLOR	LENGTH PER REEL
R - Regular	M - Mono	T - Top	L - Low	W - White	L05 - 5mtr

Sample: LFX-W-9.6-CTWD-1828-Z9-168-24-CV-10-H-1-HT-R-M-T-L-W-L05