

INSTALLATION MANUAL VERTEX GRAZE

VTG



MANUAL

Product technical data available on the label.

Please read the following instructions carefully and keep for future reference.

Always disconnect the power supply before installing the fixture or performing maintenance on it.

This fixture must be installed by a qualified electrician.

Unauthorized alterations to or tampering with the product will invalidate the warranty.

YYZ Lighting reserves the right to change the information contained in this document at any time without prior notice being given.

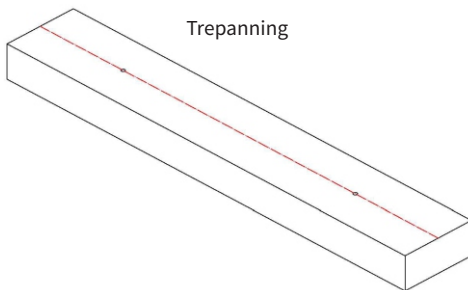
YYZ Lighting will not be held responsible if its fixtures are not installed in accordance with local standards.

Product for indoor and outdoor applications.

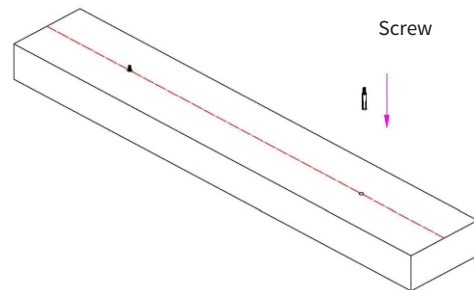
Warning: do not use high-pressure jets to clean the product.

To clean the lens, use only a damp cloth. Do not use cleaning products or alcohol.

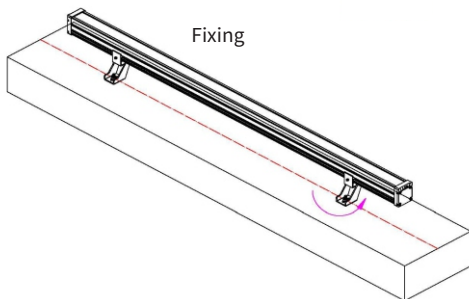
Max temperature of lighting fixture: 45° C



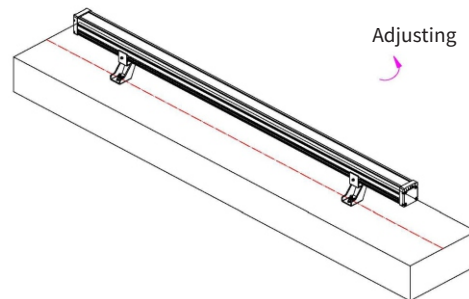
Base on the bracket, the first drill 2 holes



Place the expansion screw rubber sleeves into the holes



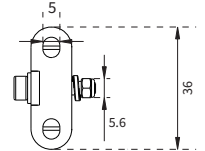
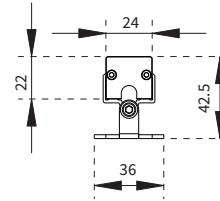
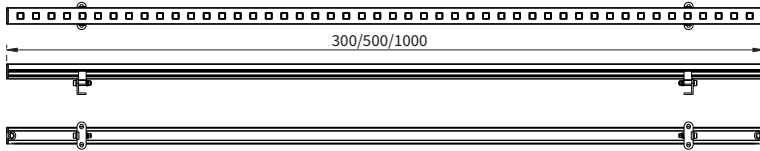
Fix the fixture by expansion screw on wall or fixed directly by self-tapping screw on wall



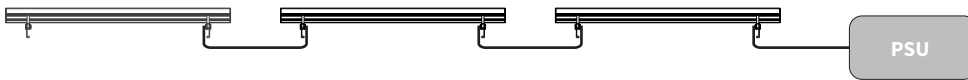
Adjust angle after installation

VTG

FIXTURE DETAILS



CONNECTION



The individual lamps must be connected in parallel. Only power up the system once all the lamps have being connected.